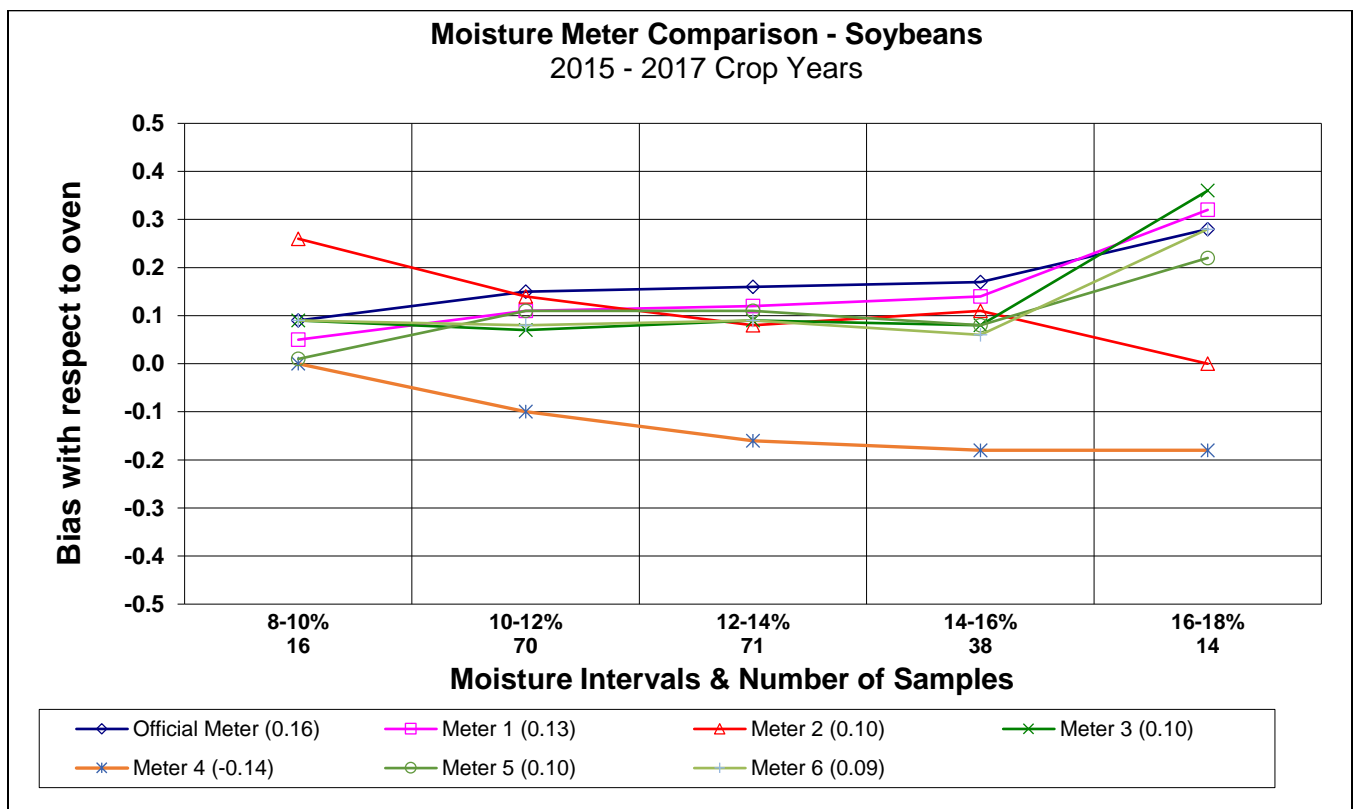
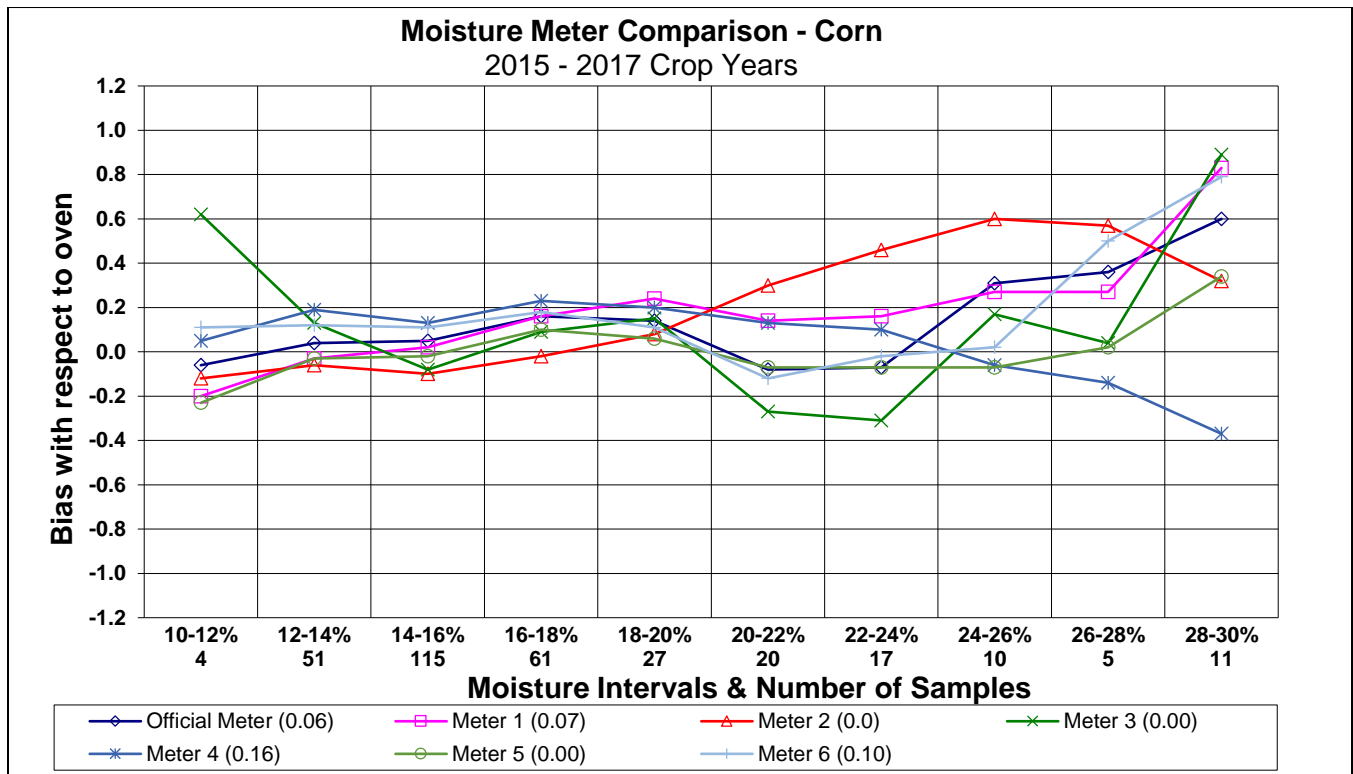
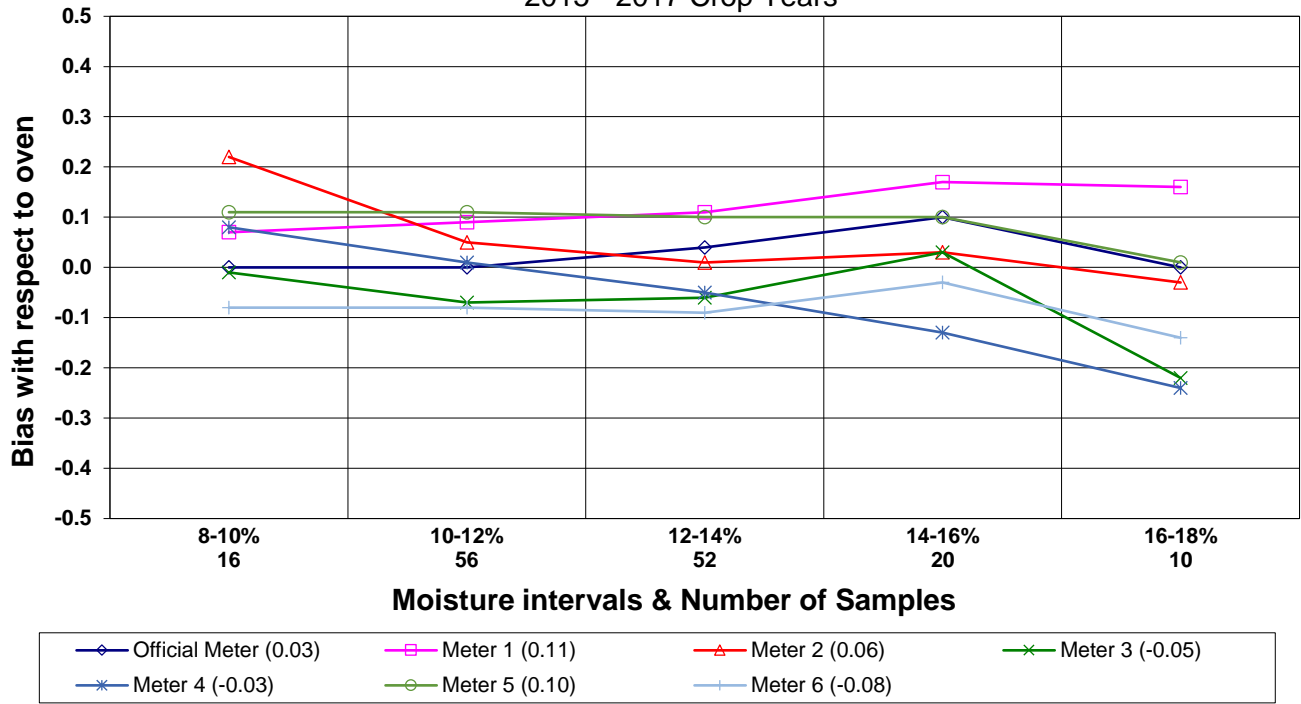


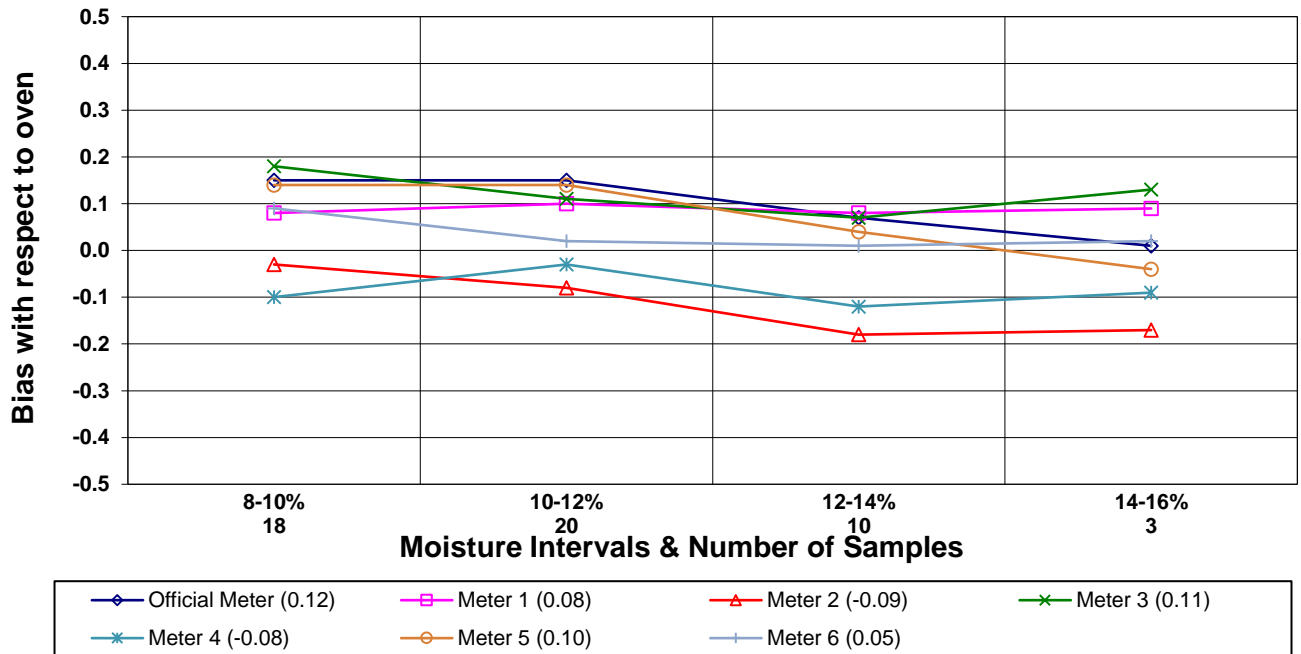
2015 – 2017 GMM Phase II Comparisons: August 2018



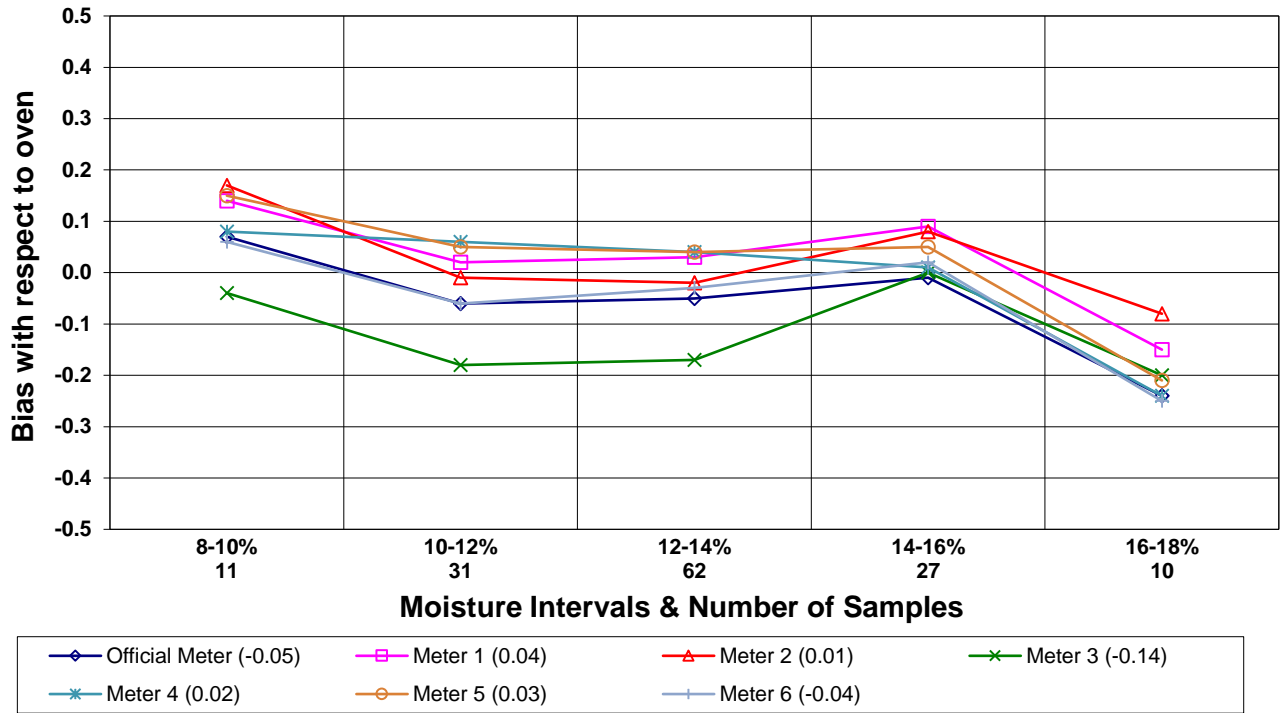
### Moisture Meter Comparison - Hard Red Winter Wheat 2015 - 2017 Crop Years



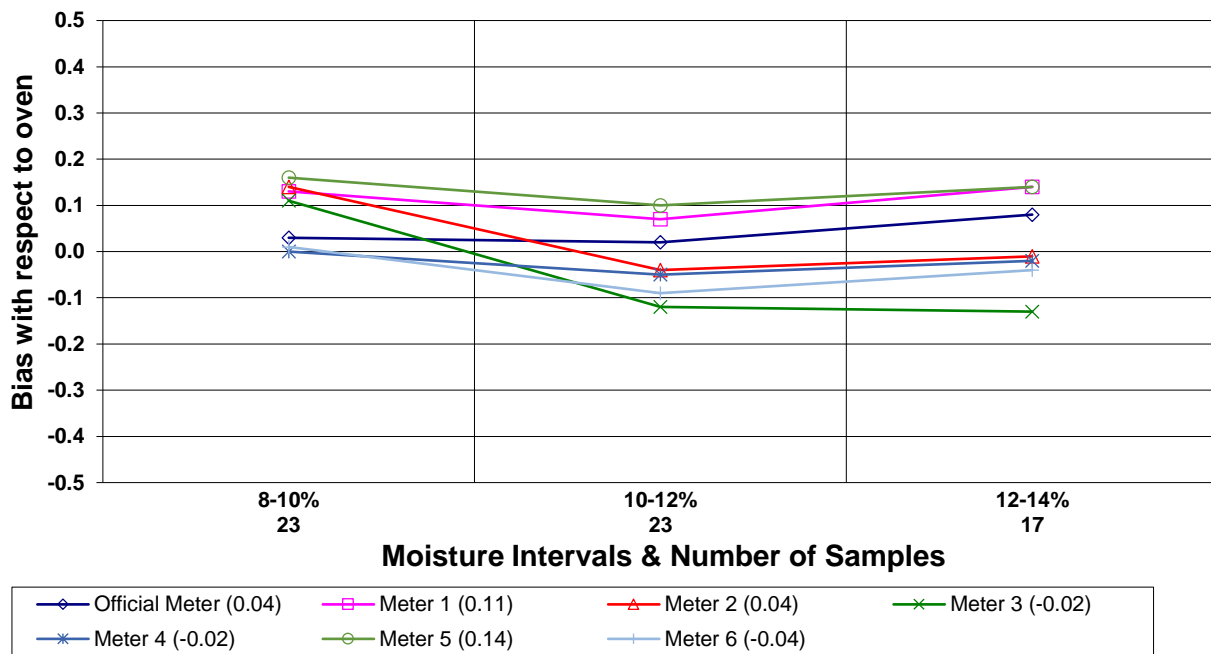
### Moisture Meter Comparison - Durum 2015 - 2017 Crop Years



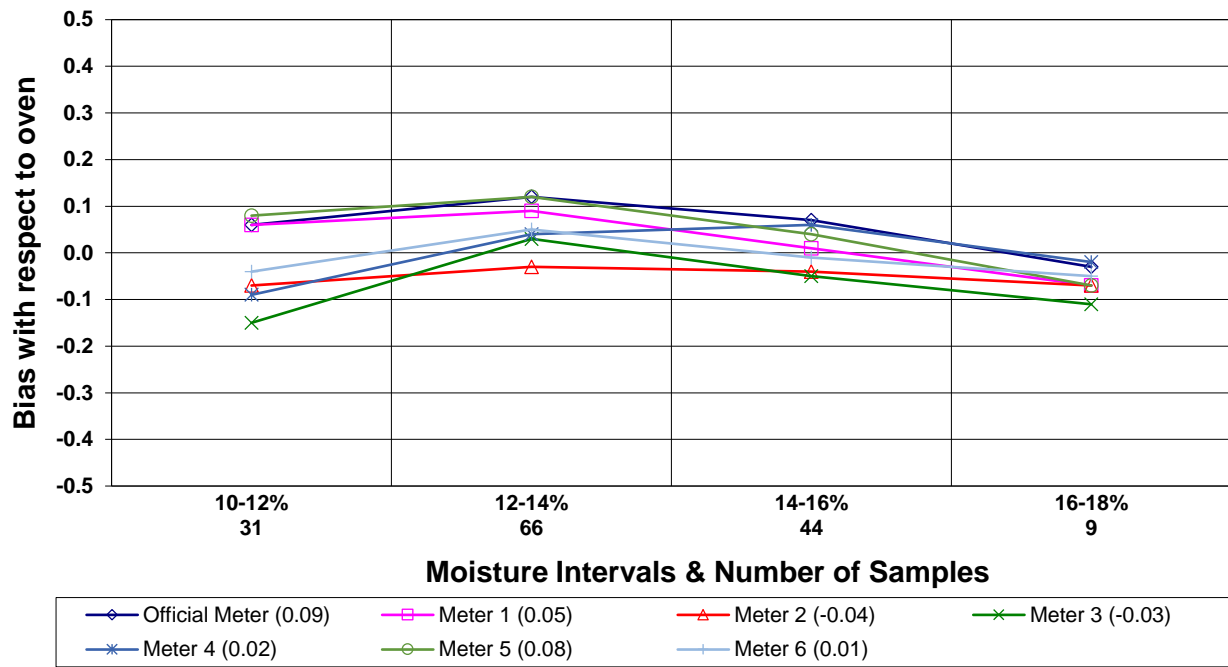
**Moisture Meter Comparison - Hard Red Spring Wheat  
2015 - 2017 Crop Years**



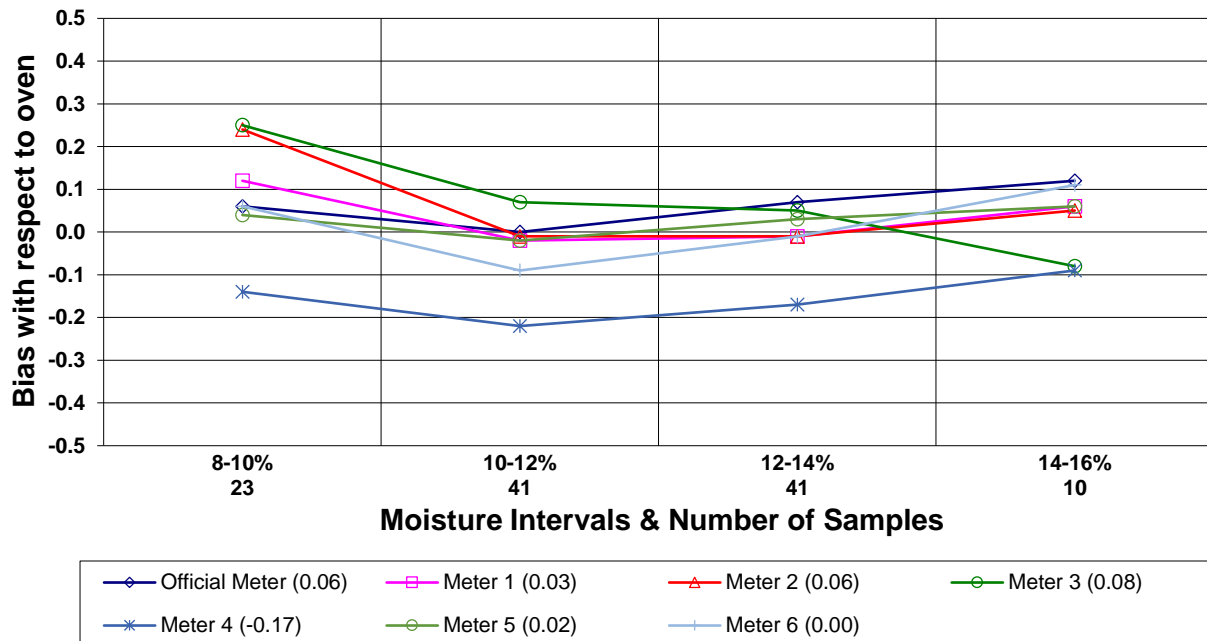
**Moisture Meter Comparison - Hard White Wheat  
2015 - 2017 Crop Years**



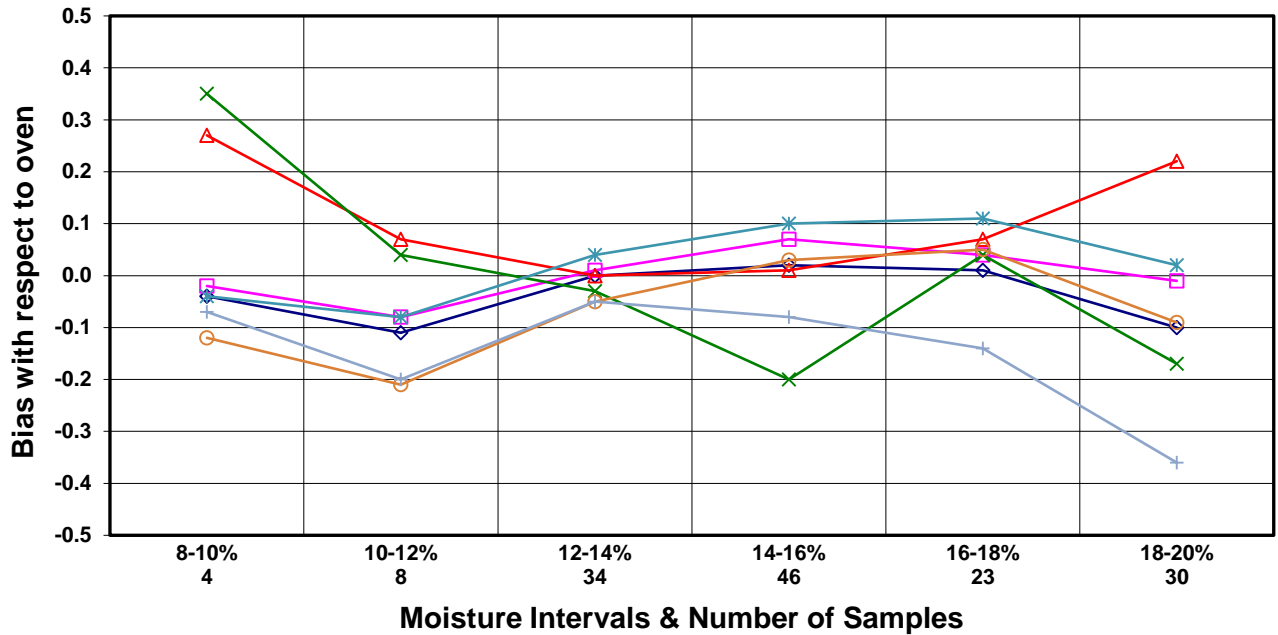
**Moisture Meter Comparison - Soft Red Winter Wheat**  
2015 - 2017 Crop Years



**Moisture Meter Comparison - Soft White Wheat**  
2015 - 2017 Crop Years

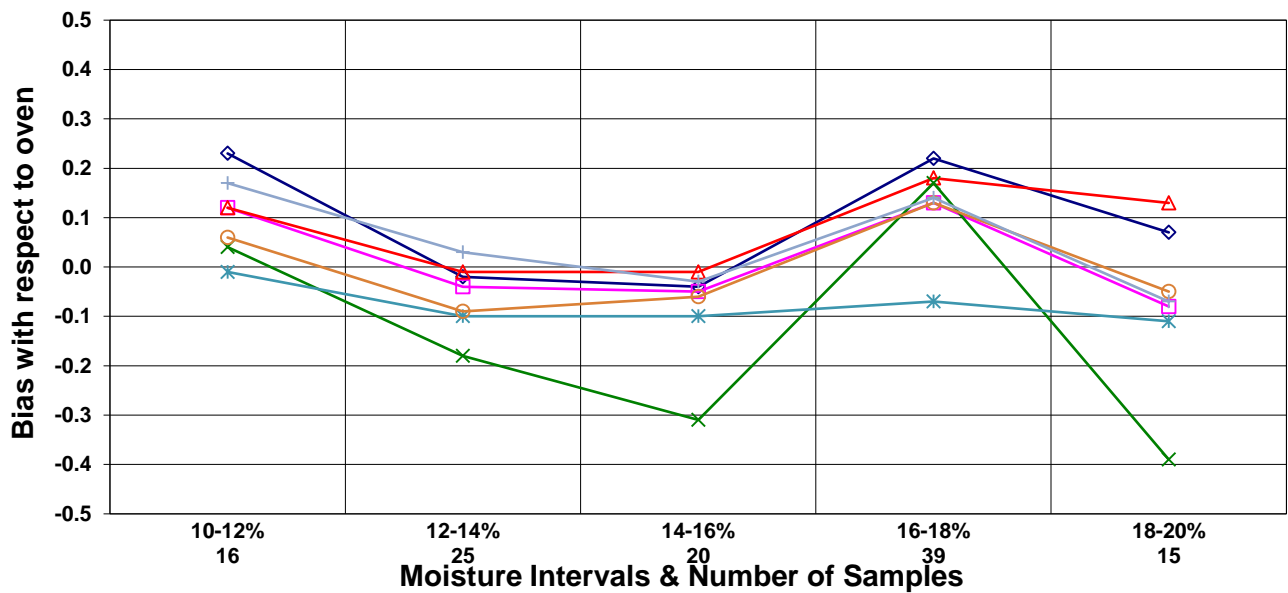


**Moisture Meter Comparison - Long Grain Rough Rice**  
2015 - 2017 Crop Years



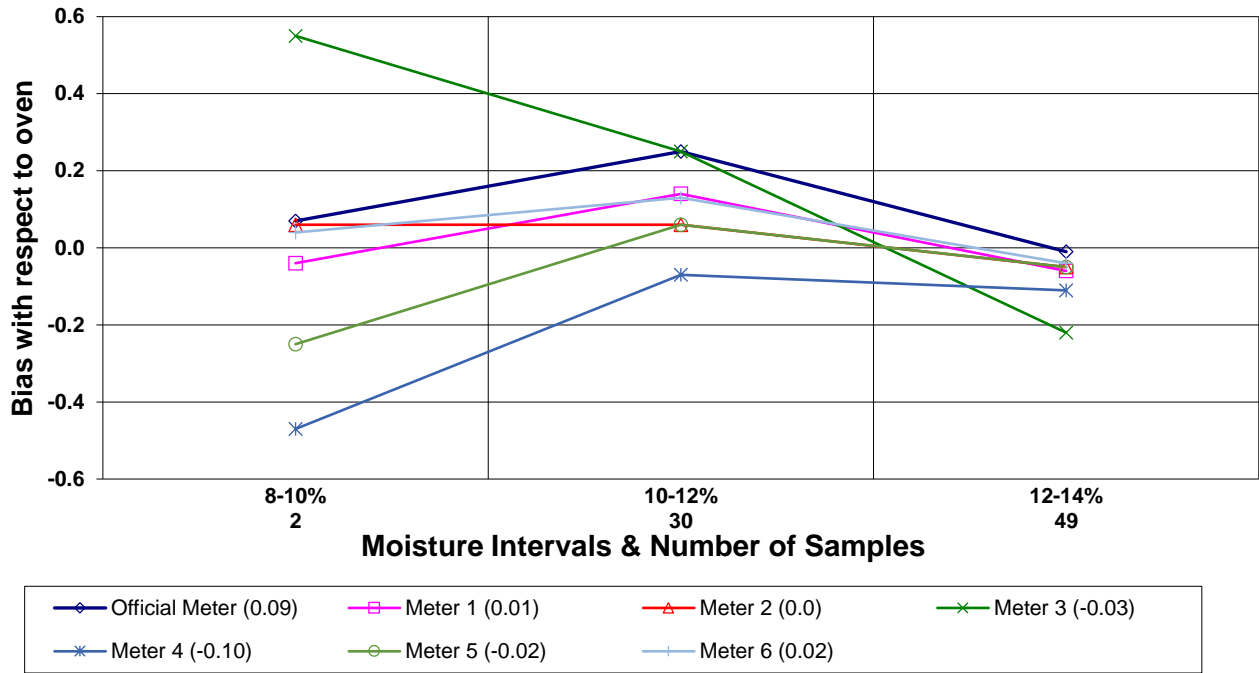
- ◆ Official Meter (-0.04)
- ◻ Meter 1 (0.02)
- ▲ Meter 2 (0.11)
- ✕ Meter 3 (-0.15)
- ✱ Meter 4 (0.05)
- Meter 5 (-0.04)
- + Meter 6 (-0.20)

**Moisture Meter Comparison - Medium Grain Rough Rice**  
2015 - 2017 Crop Years

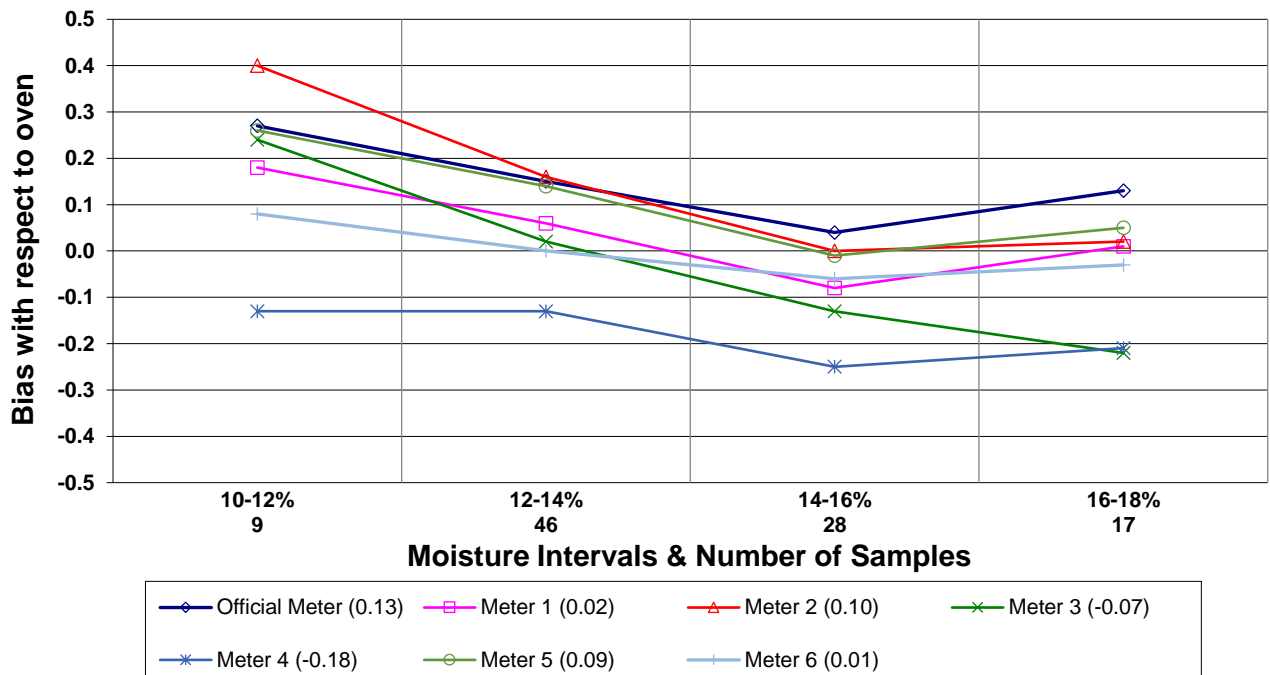


- ◆ Official Meter (0.14)
- ◻ Meter 1 (0.1)
- ▲ Meter 2 (0.13)
- ✕ Meter 3 (-0.15)
- ✱ Meter 4 (-0.13)
- Meter 5 (0.01)
- + Meter 6 (0.08)

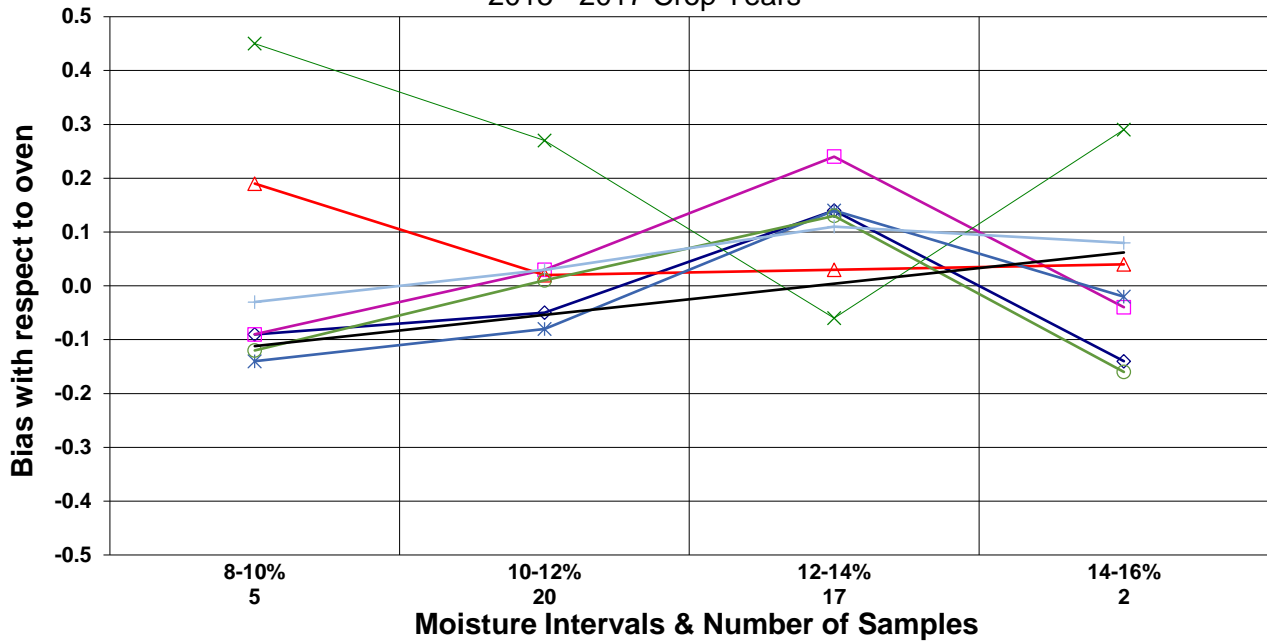
**Moisture Meter Comparison - Oats**  
2015 - 2017 Crop Years



**Moisture Meter Comparison - Grain Sorghum**  
2015 - 2017 Crop Years

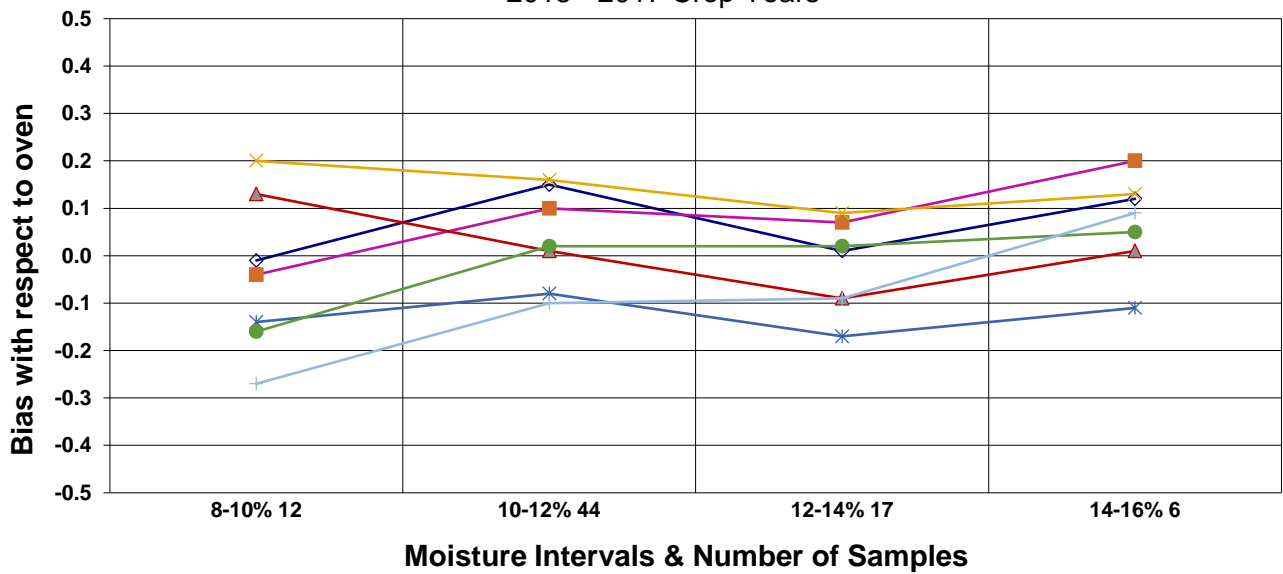


**Moisture Meter Comparison - Six Row Barley**  
2015 - 2017 Crop Years

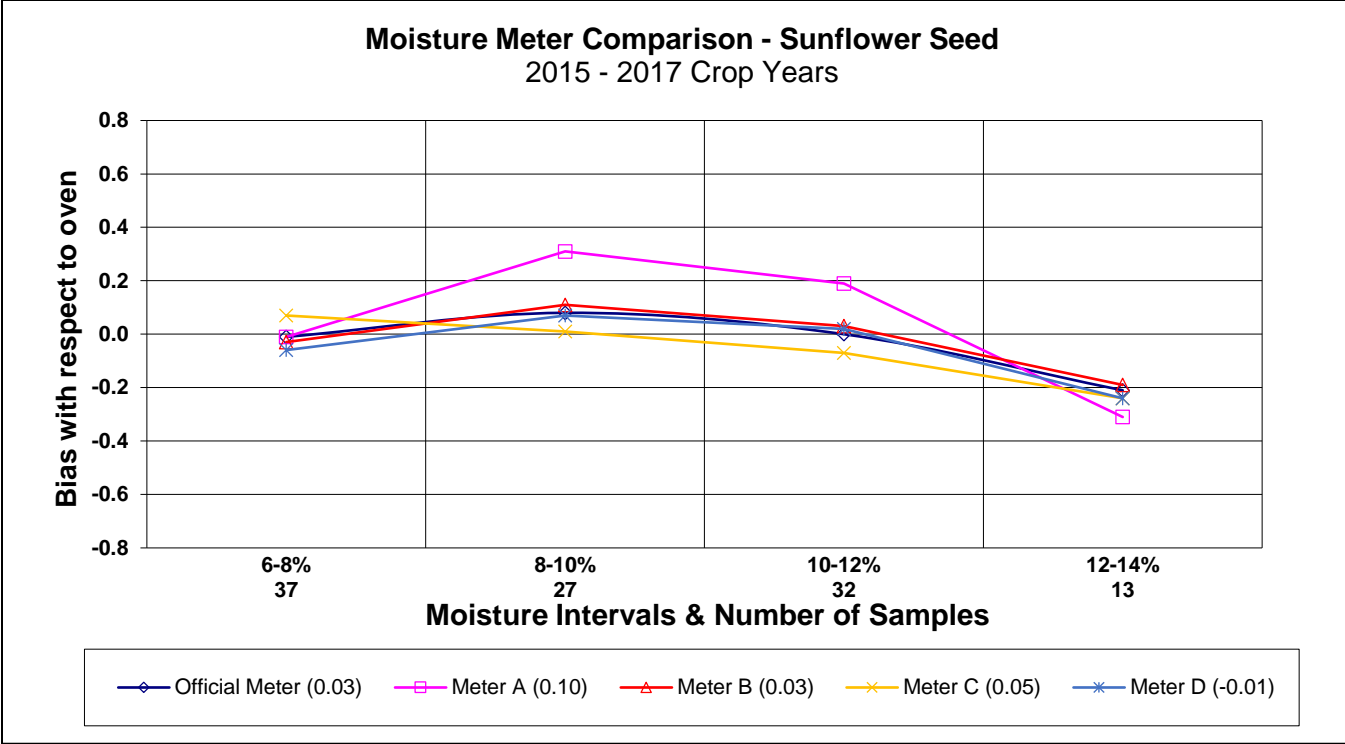


- ◆ Official Meter (0.02)
- ◻ Meter 1 (0.09)
- △ Meter 2 (0.05)
- × Meter 3 (0.17)
- ✱ Meter 4 (0.0)
- Meter 5 (0.03)
- + Meter 6 (0.06)

**Moisture Meter Comparison - Two Row Barley**  
2015 - 2017 Crop Years



- ◆ Official Meter (0.09)
- ◻ Meter 1 (0.08)
- △ Meter 2 (0.01)
- × Meter 3 (0.15)
- ✱ Meter 4 (-0.11)
- Meter 5 (0.00)
- + Meter 6 (-0.11)



On May 1, 2013, the USDA GIPSA official moisture meter for all fifteen NTEP grains switched to the Unified Grain Moisture Algorithm (UGMA) technology. The Official Meter designation in the above comparison charts is for the UGMA master system.